

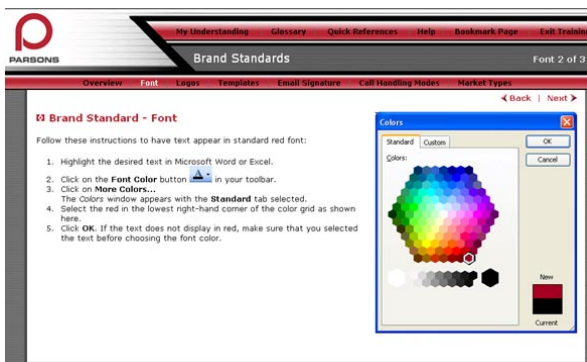


The inspire lcms™ system was created by Rivertown Communications to facilitate the rapid development and delivery of multiple-module e-learning systems. Using inspire’s™ input tools, multiple developers can create and simultaneously input illustrations, photos, audio, video, interactions and textual content. The content is stored on Rivertown or client servers and can be arranged and presented in modules, chapters and sub-chapters. Existing content is easily modified by client administrative staff or Rivertown Communications personnel and the content presented instantly reflects the changes made. Integrated navigational controls provide system users persistent access to system help, definitions, glossaries, and printable documents.

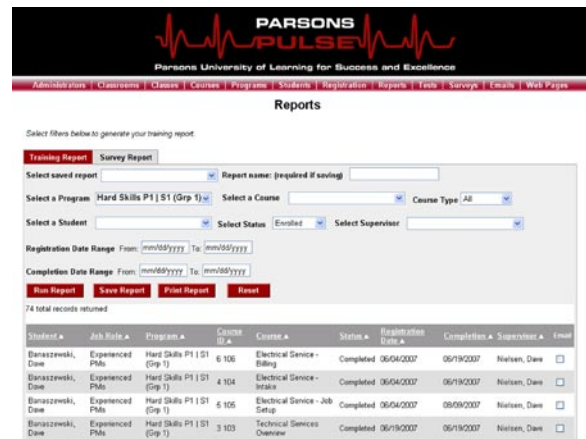
The optional Learning Management System (LMS) integrates seamlessly with the inspire system and handles all learner tracking and course management tasks. Learner progress for both online and classroom courses can be tracked. Multiple report options allow administrative staff to view and monitor learner progress.

Inspire lcms™ is a semi-custom system designed to be integrated into your existing workflow so your learners will find it easy to incorporate your training material into their daily schedules. The appearance of inspire™ will be customized to match your organizations brand.

The following screen captures are typical of inspire lcms™. (These are branded for our Parsons Electric customer.)



This is typical of a content screen the learner would see.



A screen from the LMS portion of inspire™. On this screen a system administrator can obtain reports on learner progress.